

Honda SENSING Elite Next Generation

Objective

This is an innovative safe driving system that aims to realize a zero-accident society.

Details of the Technology

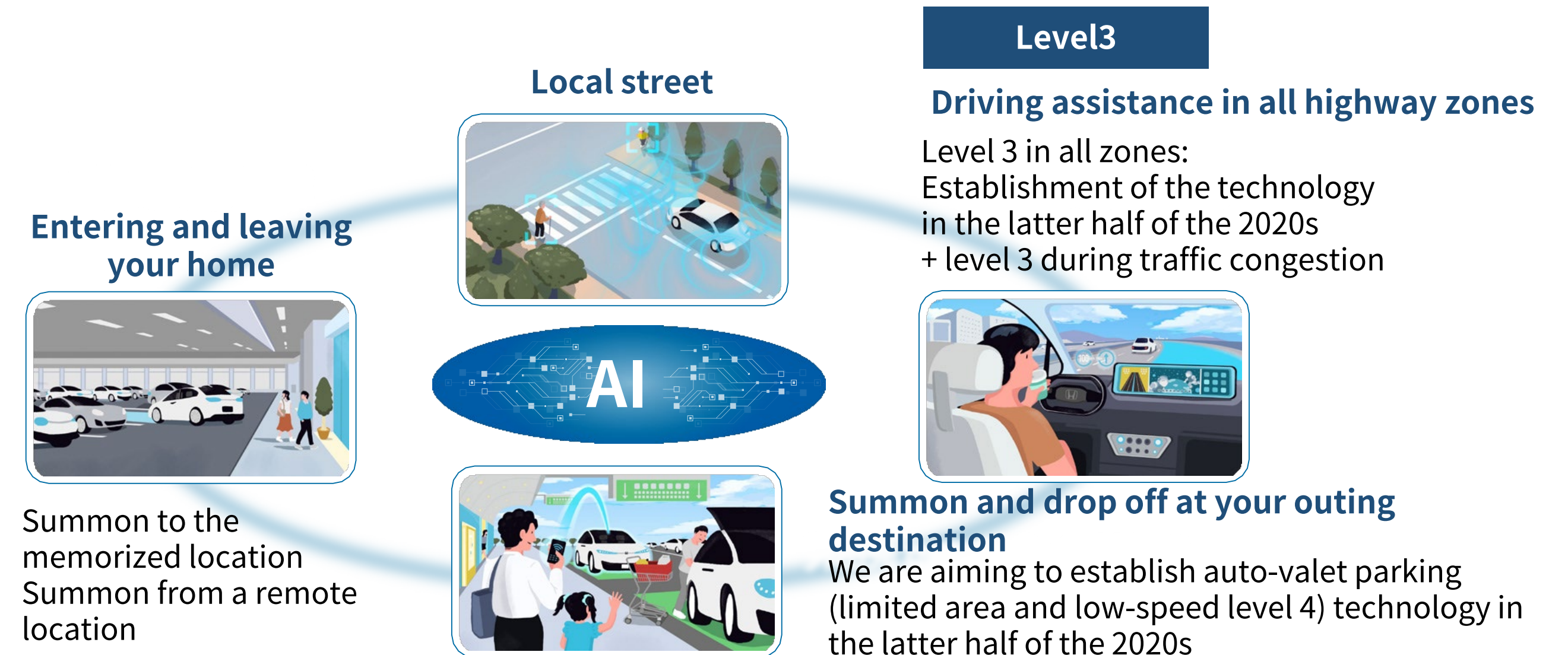
※ This technology is applied according to the laws of each country

It supports safe and seamless mobility with peace of mind including on ordinary roads from your home to your destination with recognition and understanding technologies in the complex environment of ordinary roads

We will realize driving support including on ordinary roads by developing advanced recognition and control that also supports complex environments

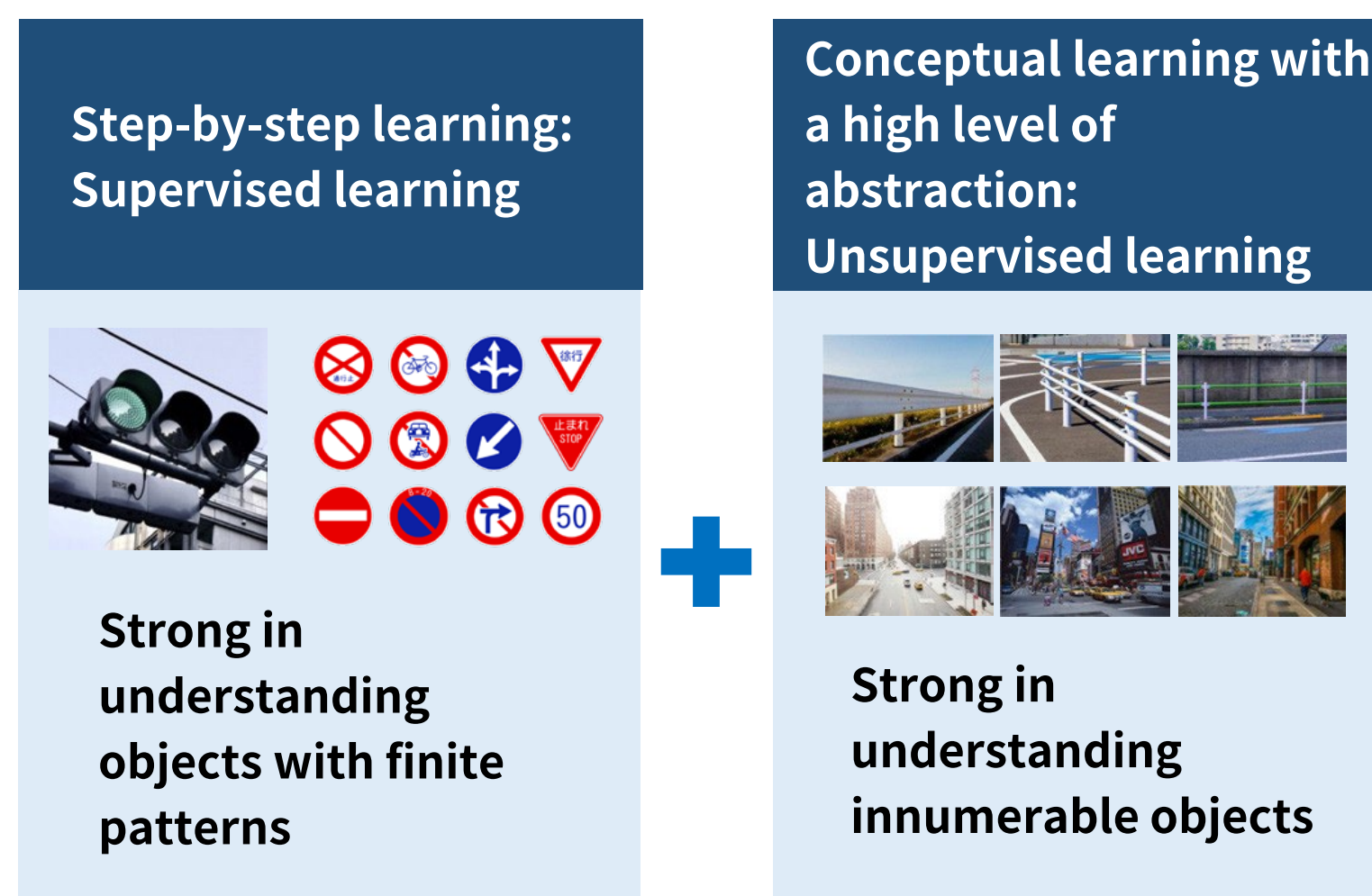
Technical features

- Accident avoidance with risk prediction
- Reduction in the burden of driving on ordinary roads with course understanding



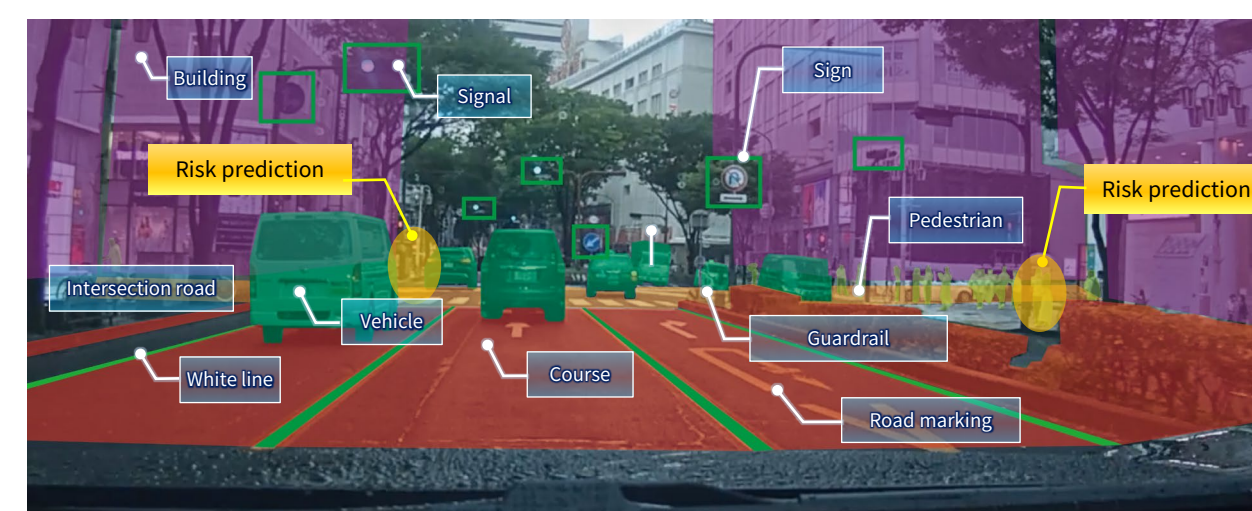
Introducing AI technology into recognition and understanding technology in the complex environment of local street
Can lead to a further reduction in accidents in all settings

Honda's Original AI It is possible to understand, like humans, even objects with infinite patterns with original AI technology to understand the target conceptually



We are aiming to realize driving support on ordinary roads by predicting hazard risks at intersections and on roads with poor visibility

It is possible to recognize complex settings including buildings, guardrails and intersecting roads



Growing AI Feedback of knowledge and concepts obtained through experience in the real world

AI captures unknown settings in various road environments with cloud information obtained from vehicles equipped with Honda SENSING. Updating hazard risks and course understanding leads to a continual improvement of the capacity to deal with ordinary roads.

